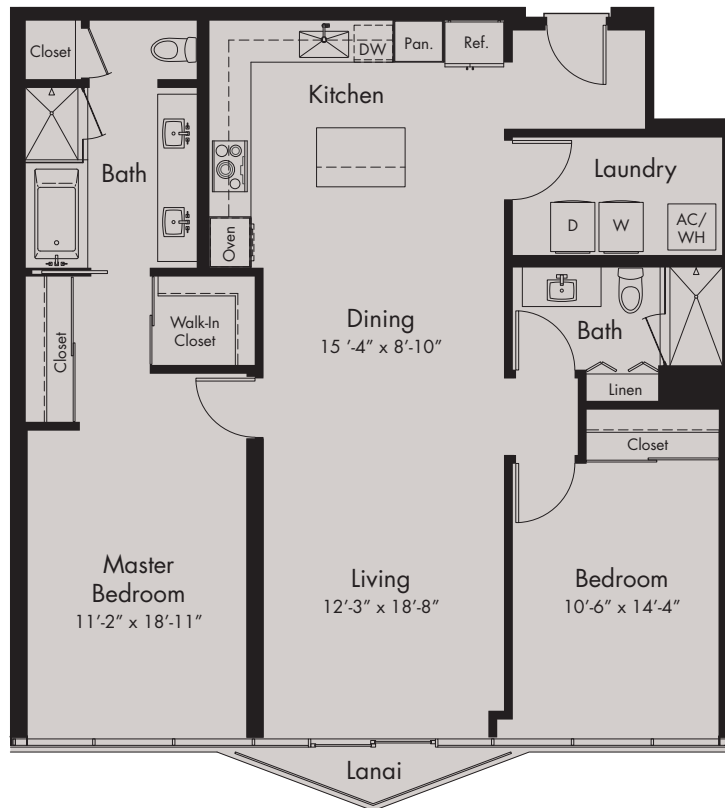
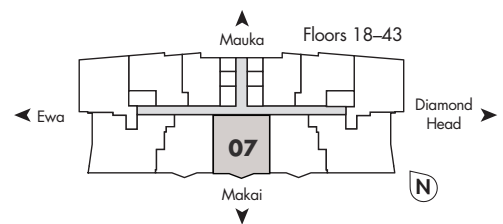


# FLOOR PLAN – TYPE F



## Type F

2 Bedroom / 2 Bath  
1,274 Square Feet\*




\*All square footages are approximate.  
See condominium map for details.

Symphony Honolulu Sales Gallery  
INspiration at the Honolulu Design Center  
1250 Kapiolani Boulevard, 3rd Floor, Honolulu, Hawaii 96814

**808.596.8688** [SymphonyHonolulu.com](http://SymphonyHonolulu.com)

Exclusive Project Broker: Heyer & Associates, LLC  
Courtesy to qualifying brokers; see project broker for details



 The floor plans and computer renderings shown are for illustration purposes only and are not intended as a warranty or representation by the developer. The developer hereby disclaims any representation, warranty or assurance to a prospective buyer regarding the size, height, location or composition of any improvement to be constructed in the project and the developer reserves the right to alter its pricing, schedule, and to change any floor plans, materials, appliances and other features shown. All views shown are approximate. Please confirm current pricing, floor plans, materials, appliances, and other features as part of your purchase process.

**NOTICE:** Obtain the Property Report required by Federal law and read it before signing anything.  
No Federal agency has judged the merits or value, if any, of this property.